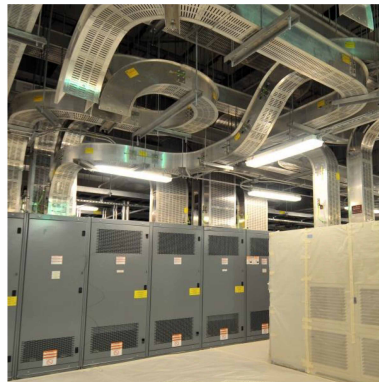


CONSISTENTLY MAKING PROJECTS WORK



COMPANY PROFILE



CONSISTENTLY MAKING PROJECTS WORK

INTRODUCTION

Saudi Taab Contracting Company Mechanical, Electrical and Plumbing (MEP) arm, proud to be a leading provider of EPC and design & engineering and commissioning services in the fields of mechanical, plumbing, electrical, telecommunication, HVAC & Building management Systems for residential, commercial & industrial construction project.

Since our establishment in 1998 we have built our reputation on outstanding design concepts, value management and timely project delivery. We have the suitable resources and experience to meet the needs of a wide variety of clients.



Mussab Al-Khudairi
General Manager (GM)



Vision And Philosophy

The vision of Saudi Taab is to strengthen its electro mechanical by upholding its rigid engineering standards and by properly responding to the changing complexity of projects. Our experience and reputation are built on fulfilling clients' needs efficiently.

Our philosophy is the constant commitment to exceed the expectations of our clients, subcontractors, workforce, and suppliers by developing prolonged relationships through integrity, professionalism, and quality which shall yield the success of any project.

Core Values

- We collaborate and communicate to remove complexity, preserve transparency, and strive for clarity in our business.
- We attract, recruit and retain talented people, who are accountable. We recognize, evaluate and reward their contribution to the success of the company, we invest in them and they will always be our most valuable assets.
- Run it like you own it. Our employees act like business owners, their responsibilities entitle them to make thoughtful decisions accordingly.
- We always do the right things and do things right, the first time and every time.
- We are a humble, reliable, and trusted partner for our clients and colleagues.

Mission Statement

It Is The Saudi Taab Management Mission To Create An Achivable Balance Between Company, Client And Employee That Enables Us To Equally Strive, While Contributing To Our Overall Corporate Vision.

Each Day, The Management Strive To Reach The Company's Vision Through The Succesfull Implementation Of The Following Management Tools As A Minimum.

- Effective Budgetary Planning And Compliance
- Employee Welfare And Personal Development
- A Decentralized Regional Management Structure
- Efficient Asset Management And Resources Utilization

Capabilities

Through years of experience, we obtained a thorough understanding of the clients' needs for accuracy in planning, budgeting, scheduling and executing construction projects. Hence we are dedicated to executing every project on time and within the assigned budget. Based on the specification requirement of the client, Saudi Taab teams are experienced in fulfilling the responsibilities.

Commitment

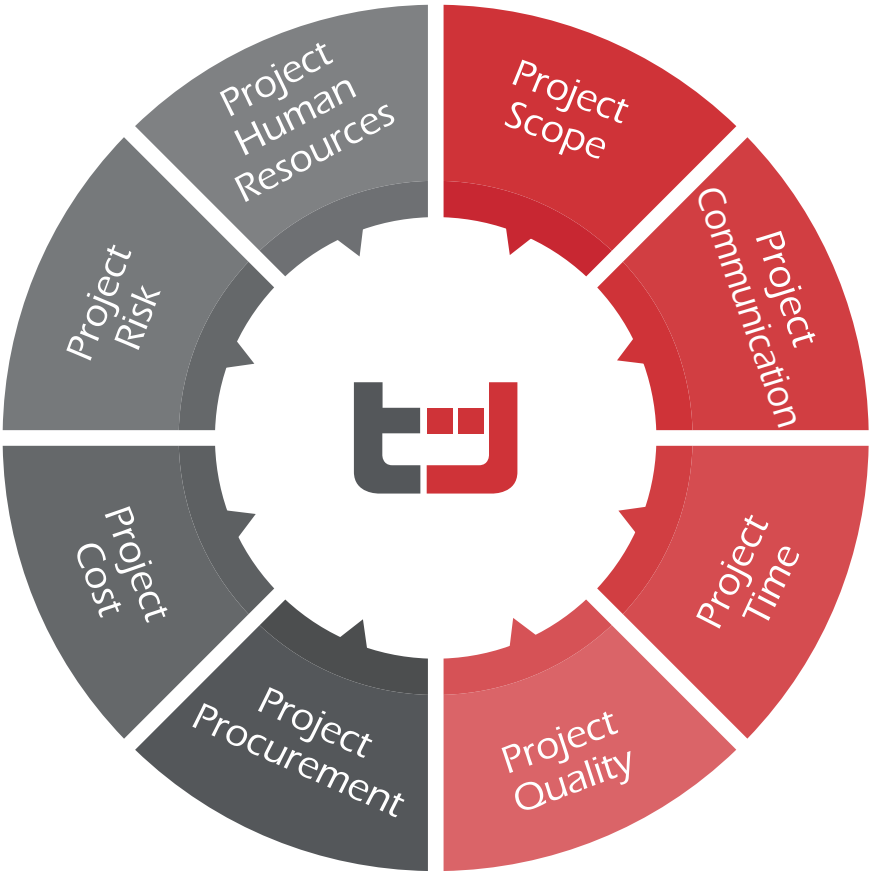
we are committed to consistently meeting our customer's expectations in service, delivery, installation and product performance. We promote continuous improvement by properly maintaining and meticulously reviewing and strict implementation of our compliant quality management system.



Project Management & Control

Further to our commitment to sustainable construction, Saudi Taab has developed “Optimize Resources” initiative. This internal program addresses the vital role we play in wise stewardship of resources from within the construction industry. Fundamentally, our program balances our client’s financial, environmental, and operational considerations with design, materials, energy, and construction. Through logical integration of these variables, we are able to deliver high-quality complex project in a win-win fashion where building needs are met today without sacrificing the needs of our communities tomorrow. Our integrated management system is principal coordination method as described in this figure.

Our “Optimize Resources” program elevates the construction-end of project realization to a new level by standardizing operating procedures to assist in decision making and achieving sustainability requirements on our projects. It’s one more way that we are integrating low cost practices into our daily activities and our culture.



Quality Policy Statement

Team Work

we work collaboratively towards common goals.

Accountability

we take the ownership and pride in our action and put forth our best effort

Adaptability

we move with speed & dexterity to adapt and adjust to emerging client and project requirement

Building Relationship

we strive for long team relationships over short term wins.

HSE Policy Statement

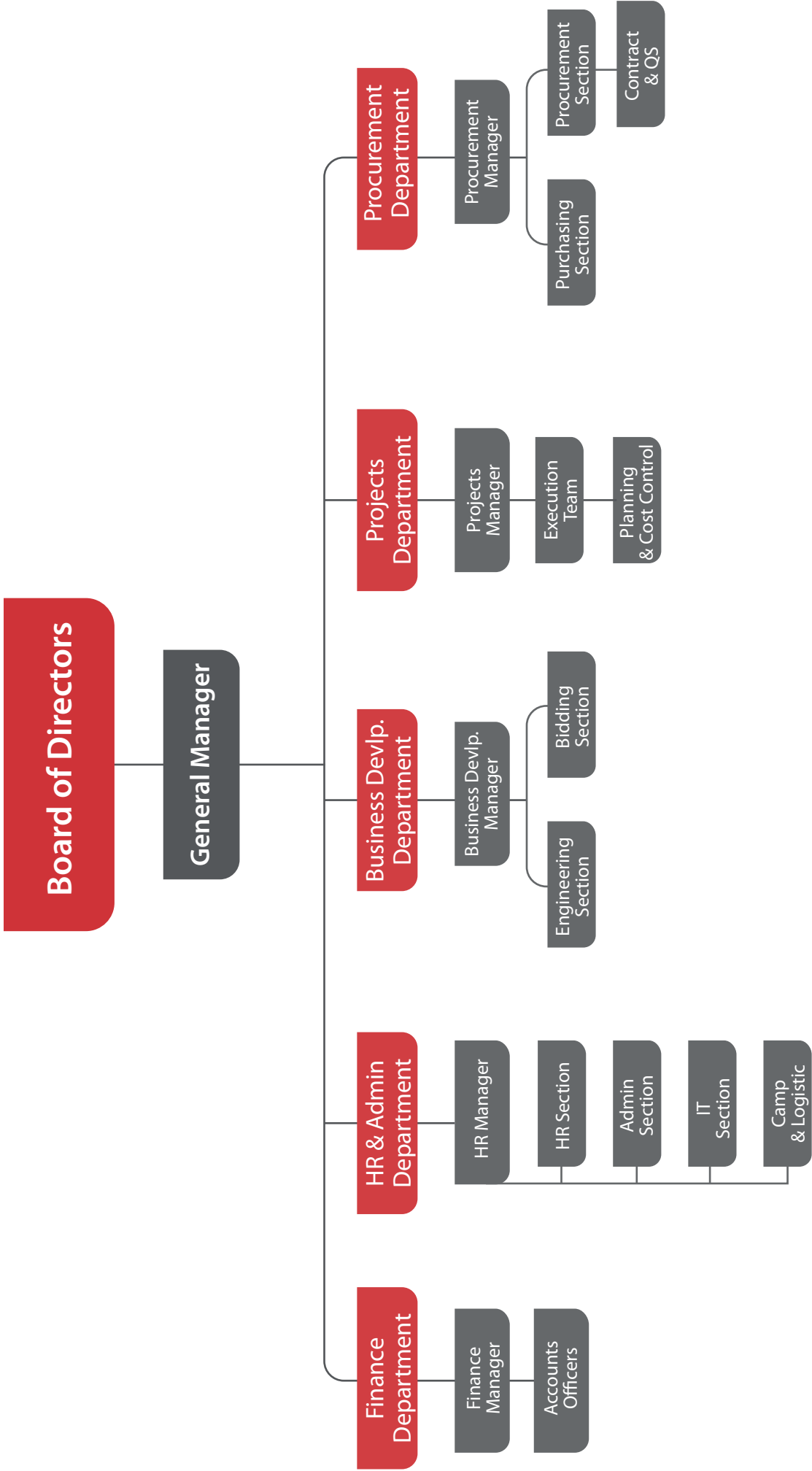
SAUDI TAAB believes that employees are our most important assets and their safety and health is our greatest responsibility. To this end, every reasonable effort shall be made in the interest of accident prevention, Safety, Health and environment preservation.

Safety our business we provide and maintain the following:

- Strive to achieve the goal of zero accidents and injuries
- A safe working environment
- Safe systems of work
- Plant and substances in safe condition
- Facilities for the welfare of workers
- Information, instruction, training and supervision to ensure each worker is safe from injury and risks to health
- A commitment to consult and co-operate with workers in all matters relating to health and safety in the workplace
- A commitment to continually improve our performance through effective safety Management



Organizational Chart



Develop Success
Strategy Work Project
HVAC Team MEP Success
Panels **MV** Saudi Project
Taab Success Success Taab
Firefighting Strategy **Electro**
Mechanical Management
Develop Team Taab HVAC
Develop Success Project MEP Work Saudi **Chillers** FCU
Success **AHU** Panels Management **Boilers** Taab Strategy **Gas** LPG
Pump **FM 200 NOVEC** Strategy Success Saudi Taab Management
Develop Success **Strategy** Work **Pump** Project HVAC Team
MEP Panels **MV** Saudi Project Success **Taab**
Firefighting Strategy **Electro Mechanical** Management Develop
Team **Taab** HVAC Develop Success Project **MEP** Work **Saudi**
Chillers FUC Success **AHU** Management Boilers Taab
Strategy Work Panels Gas **LPG**
Pump FM 200 **NOVEC**
Strategy Success Saudi Taab
Management Develop
Success Strategy **Saudi**
Taab HVAC Team MEP
Panels Success MV Saudi
Project Success Taab **Firefighting**
Strategy **Electro**
Mechanical Manage-
ment Develop Team Taab **HVAC** Develop SUCCESS Project **MEP**
Work Saudi Chillers **FCU** Success AHU Panels Boilers Taab Strategy
Gas LPG Pump FM 200 NOVEC Strategy Success Saudi Taab
Management Develop Success Strategy Work Project HVAC Team
MEP Success Panels MV Saudi Project Success Taab Firefighter
Strategy Electro Mechanical Management Develop Team Taab
HVAC Develop Success Project MEP Work Saudi chillers FUC
Success AHU Panels Management Boilers Taab Strategy
Gas LPG Pump FM 200 NOVEC Strategy Success

Project **HVAC** Team **MEP**
Success **Panels** Saudi **MV**
Project Success Taab
Firefighting
Strategy **Electro Mechanical**
Management Develop
Team Management
Success Boilers Taab

MEP Work Saudi
chillers **FCU** Success AHU
Panels Management
Boilers Taab Strategy **Gas**
LPG **P u m p** FM 200
NOVEC Strategy Success
Management Boilers
TaabSaudi Success Taab

Strategy Success Saudi Taab Management Develop Success Strategy **Saudi Taab**
HVAC Team MEP **Panels** Success **MV** Saudi Project Success Taab Firefighting Strategy
Electro **Mechanical** Management Develop Team Taab **HVAC** Develop SUCCESS Project **MEP**
Work Saudi Chillers **FCU** Success AHU Panels **Boilers** Taab Strategy Gas LPG **Pump** FM
200 NOVEC Strategy Success Saudi Taab Management Develop Success Strategy Work
Project HVAC Team MEP Success Panels MV Saudi Project Success Taab Firefighter
Strategy Electro Mechanical Management Develop Team Taab HVAC Develop
Success Project MEP Work Saudi chillers FUC Success AHU Panels Boilers

Develop Strategy Work
Project **HVAC** Team **M E P**
Success Panels MV **Saudi**
Project Success Taab
Firefighting Strategy
Electro Mechanical
Management Develop Team
Taab HVAC Develop Success
Project **MEP** Work Saudi
Chillers FCU Success **AHU**
Panels Management **Boilers**
Taab Strategy **Gas** LPG
Pump FM 200 **NOVEC**
FCU Strategy Success Saudi
Taab Management Develop
Success **Strategy**
Work **Pump** Project **HVAC**
Team MEP Panels **MV** Saudi
Project Success Taab
Firefighting Strategy **Electro**
Mechanical Management
Develop Team Taab HVAC
Develop Success Project **MEP**
Work Saudi **Chillers** FUC
Success **AHU** Manage-
ment Boilers Taab Strategy
Gas **LPG** Pump FM 200 NOVEC

executive for accounts receivable and accounts payable, bank transaction offices, L/C specialist and financial auditor.

Administration Management Team

The HR manager provides all resources such as human resources, equipment and logistic support services for all projects. The team comprises with HR officers, man power officer, logistic officer, camp administrator, insurance officer.

Every team is managed by the executive manager of the company, ensuring proper leadership and consistent business practices. The executive managers are supported by the GM who leads the corporate quality requirements and industrial safety implementation while oversee the team operations as well as the performance.

This structure allows us to implement one corporate policy of decentralized management structure, allowing each executive manager to delegate authority for handling his team business line.

We look forward to the opportunity to serve your organization in the near future.

Procurement, Purchasing & Logistic.

Saudi Taab Commercial Department handles all purchasing, contract & quantity surveying, and procurement matters. Each has its specialized division.

All procurement matters are managed in this department, whether it involves the subcontracting of general or specialty services or the procurement of materials and equipment for the project. The Procurement Team handles the soliciting of competitive bids, awarding subcontracts and procuring major material items while the field team manages the delivery of materials and monitors the progress of work.

Global supply shortages and price escalation could create severe project challenges; the process of procurement requires considerable sophistication and prudence. Saudi Taab Procurement Team has the essential experience and knowledge in all phases of the procurement cycle, from planning through requisition, evaluation, selection, vendor fabrication, expediting, shipping, delivery, and inspection, to on-site storage and handling.

Contracts & quantity surveying is a division within the commercial department. Its main activities are managing the risk assessment of bids, processing Variation/claims analysis and developing Contractor's/Subcontractor's policy and program administration.

Professional Team

Project Management Team, Executon.

The team comprise of mechanical engineer, electrical engineer, project manager, construction manager, contract administrator, quantity surveyor, project planner, project controller, discipline engineer, procurement engineer, QA/QC Engineer, safety engineer, commissioning engineer, logistic support services, Auto Cad, equipment reliability team.

Business Development & Engineering Team

Bidding manager provides detailed engineering, 3rd party validation and tendering for the new project. The team comprises of discipline design engineer, certified professional engineers, quantity

surveyor, estimation engineer, AutoCAD services, project record & documentation data bank.

Wherever possible all construction work should be completed within budget and to the agreed timescale. The responsibility of scheduling the work, ensuring that sound organisational skills are employed and that all the raw materials are present also lies with a civil engineer.

Financial Management Team

Finance Manager provides the financial support to the organization. It's supporting all the financial needs by every team, dealing with the national banks to support procurement & Site Operation. It convinces the consortium the budgetary requirements and plan the finance based on the budgetary control method. The team



OUR SERVICES SPECTRUM

Saudi Taab is dedicated to providing its client with the highest quality service available within its specialized division such as electrical, mechanical, telecommunication, HVAC & Building Technology. It is our common goal of providing this level of excellence to our clients that unites all of our professional groups and instills a sense of self-worth, high employee morale and a customer perception of market permanence. We will continue to strive forward to ensure that our services are at all times delivered with quality and customers satisfaction.

ACTIVITY

MECHANICAL CONSTRUCTION ACTIVITY

- Mechanical systems Design & Engineering.
- Air-conditioning and ventilation, (HVAC)
- Installation of various types of Pumps.
- fuel System with Installation of fuel tanks (Above ground & Underground).
- Firefighting systems, (Dry & wet riser system, CO2 system, FM20, foam ect.)
- Complete mechanical work related to swimming pool.
- Installation of LPG system.
- Boiler System Establishing
- Medical Gas
- Plumbing & Drainage
- Infrastructure Utility (Sewage network, storm water, irrigation system, potable & fire water system)

ELECTRICAL CONSTRUCTION ACTIVITY

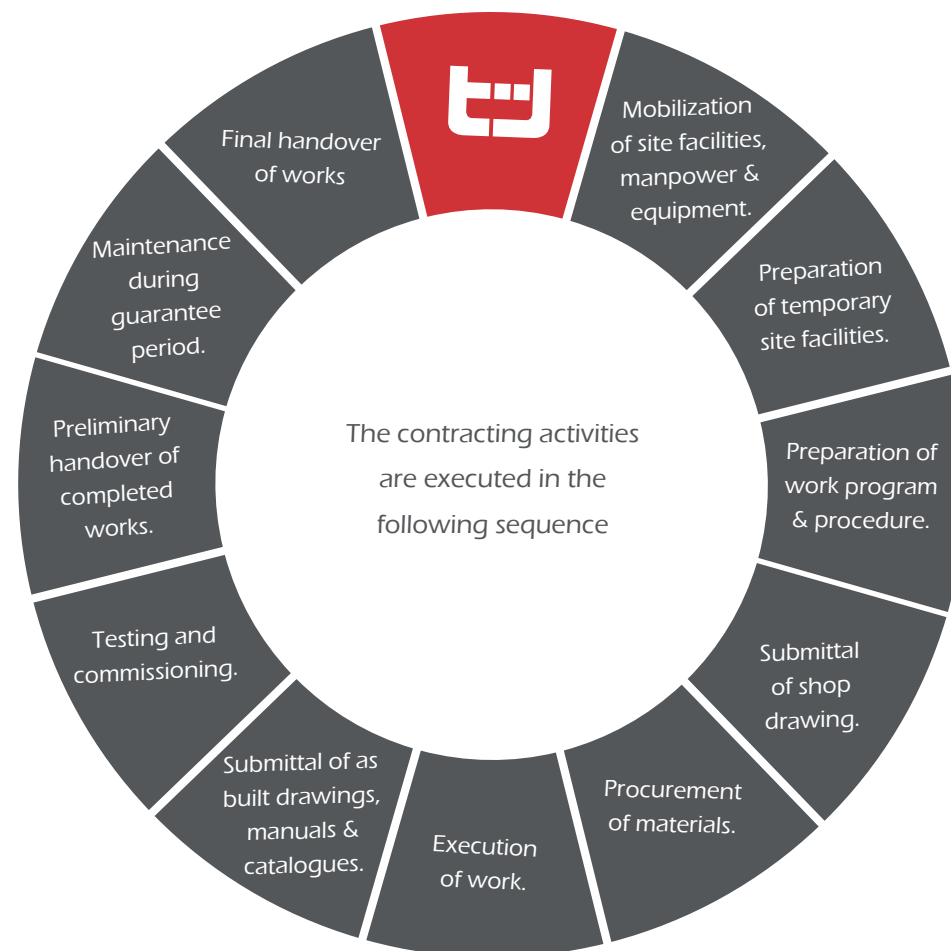
- Electrical Power distribution for low & medium voltage systems, design and installation.
- Supply and installation of 11KV/415V/380V/220V transformer substation.
- MV & LV control systems.
- Switch gears.
- Supply installation for low & medium voltage cable for infrastructure .
- Installation of power stations.
- Electrical installation for building.
- Supply and installation of low current systems (Fire Alarm, CCTV, BMS, IPTV, AV, etc.)

INSTRUMENTATION & CONTROL SYSTEM CONSTRUCTION ACTIVITY

- Control panel design, engineering procurement & installation
- PLC software design and implementation.
- Special purpose PCB's
- Temperature control instruments and systems installation.
- Supply of industrial sensors.
- Service and repair of instrumentation and industrial electronics
- Motor control systems & stepper.
- Programming, uploading and modifying graphics of PLC systems
- Configuration of operator panels when linked to PLC's and intelligent instruments for specific customer requirements
- Engineering, Procurement and Construction of special purpose printed circuit boards.



Project Execution Sequence



Certificate &
Award

- ISO 9001 : 2008
- Civil Defense Approval
- Construction Week Award
(2015 Subcontractor of the year)



Diversity

- Office Buildings & Business Centers
- Special Purpose Facilities
- Residential & Housing Developments
- Hospitals & Medical Facilities
- Banks And Financial Institutions
- Industrial
- Retail & Commercial Centers
- Military & Defence

Our Projects



Work includes construction of six high-rise office towers, four low-rise office buildings, a multi-purpose business center, recreational centre, 48 town houses in addition to all service buildings. Total built up area is about 339,000 m2.

Taab scope is not limited but includes the following:

- Complete MEP fit out works for 20 storied 2 towers for SECO Head Quarter.
- Complete MEP Works for convention center & 48 townhouses.



Granada Residential & Business Park

Office Buildings & Business Centers



The CDC is the largest data centers in the Middle East and is classified as a mission critical facility, This project includes materials procurement, construction, testing, and commissioning of a fully operational Tier IV Corporate Data Center (CDC) to house computing systems, Building is fully equipped with state-of-the-art air conditioning, fire protection systems, and uninterruptible power supply..

Taab scope is not limited but includes the following:

- electrical equipment systems include 13.8 kV, 4.16 kV, and 480 V switchgears and transformers,
- 2 MW 13.8 kV Diesel Generators, 480 V MCCs, UPS and Battery systems, Programmable Logic Controllers (PLCs).
- Power Distribution Units (PDU's),
- Remote Power Panels (RPPs) and rectifiers and battery systems.
- Electrical Power Monitoring (EPMS) Systems.
- 48Km of duct bank for MV Cable laying works.
- HVAC system includes chilled water Plant, Cooling Towers, Air Handling Units, CRAH's, Chilled water piping and Control systems.
- A Thermal Storage Tank with a capacity to provide cooling during the UPS battery discharge, 4,000 ton hours for cooling backup.
- A direct digital building automation system (BAS).
- Internal and external firefighting system
- Plumbing / drainage system for storm water, sewage & potable water network



Corporate Data Center (Aramco)

Special Purpose Facilities



The total project built up area is 119,842 M2, 249 Villas are divided in to 6 different types based on built-up area, lay out and facilities, Each Villa is having 2 floors + roof, bedrooms, bath rooms, kitchen, maid's room, laundry area, stores & staircases. Nos. of bed rooms are minimum 3 and maximum 5 depending on type of villa.

Taab scope is not limited but includes the following:

- MEP work of Total 249 Nos. of Villas, 01 Neighborhood Mosque (450 person's capacity) Along with full underground utility infrastructure, network, sewage networks as following.
 - Sewage network
 - Storm water network
 - Irrigation network
 - Portable & fire network
 - Medium voltage network with 14 Nos of Package substations
 - Low voltage distribution network
 - Street lighting network with 193 lighting poles
 - IPTV Network

Marafiq Housing - Jubail

Residential & Housing Developments



Project is on Re-measurable basis consists of Main Hospital Building, Technical Plant, Recreation Center, male and female nurse staff housing, RO plant, sewage treatment plant, service building, Mosque and Guard Houses.

- Work includes construction of 300 bed Hospital consists of Rehabilitation Therapy department, Emergency CU department, laboratory department, pediatric critical care units, coronary care unit, cesarean/ delivery suites, main surgical suites, out patients clinics, emergency department, including all other supporting buildings.
- The total built-up area of project is 115,000 M2.
- Total Site Area of project is 198,000 M2.
- Main hospital building consists of 6 floors+ roof.
- MEP works includes, plumbing, water supply, HVAC and electrical works.

Taab scope is not limited but includes the following:

- HVAC System with 9 air cooled chiller
- Primary & secondary chilled water pumps & chilled water piping systems.
- Firefighting network including CO2, FM200 Systems
- Medical gas system
- LPG system
- Boiler and steam network
- Power distribution system in the building
- External & internal lighting system
- Low voltage network, 988 panel boards, synchronization panel
- MV Network with 15 package substation, 6 dry type transformer, 2 switch gears
- Low current system Telephone, Data, BMS, Fire Alarm, public address, nurse call etc.

Al Meqat Hospital Madinah

Hospitals & Medical Facilities



Work includes construction of Luxury Hotel located in a prime spot on the Al-Khobar cornice which directly overlooks the Arabian Gulf. Project includes 11 above ground floors that host

- 235 guest rooms with all hotel amenities. Hotel has an 11 story atrium with panoramic elevators.
- Different restaurants & cafeterias
- Business center with fully equipped conference rooms.
- Health Club and gymnasium including an indoor swimming pool
- Ballroom with a capacity of 500
- Laundry & centralized kitchen



Taab performed full MEP activities for the project, including the following:

- HVAC System with air cooled chillers & chilled water pump room
- Complete fire fitting system
- MEP for kitchen & laundry (Plumping & drainage network with lifting station)
- Power distribution network
- Lighting system
- Low current system BMS, FA, CCTV, Etc.)

Al-Khobar Sofitel Hotel

Hotel & Recreational Centers



The Alrajhi Headquarters Tower is 230 meters tall with 36 floors to accommodate Al Rajhi Bank's key business functions and will provide various amenity spaces for the occupants.

Taab scope is not limited but includes the following:

Electrical fit out work as the following:

- Power distribution system
- Lighting system
- Motorized blind power & control system
- Voice data system
- Audio visual systems

Al-rajhi Bank Headquarter

Banks And Financial Institutions



The building is 10 story tower located in the heart of Al-Khobar that was built to serve as the Eastern Province Headquarters for The SABBB Bank.

- Include a large double volume banking hall
- Basement parking garage
- Unique external design

Taab scope is not limited but includes the following:

- HVAC System with air cooled chillers & pump rooms.
- Complete fire fitting system
- Plumbing & drainage network
- Power distribution network
- Lighting system
- Low current system BMS, FA, CCTV, Etc.)

SABB Headquarter

Banks And Financial Institutions



Taab scope is not limited but includes the following:

- HVAC system with 6 Dry Chillers, Chilled Water Pumps, HVAC ducting, AHU's & FCU's Etc.
- Plumbing / drainage network with 9 lifting station
- Complete fire fighting system
- Power distribution network
- External & Internal lighting system
- Low current system (FA, Public address, BMS, CCTV ect.)

Galleria Mall

Retail & Commercial Centers



This project serves Saudi Aramco's strategies to reduce the Kingdom's reliance on liquid fuel in power generation, to provide cleaner energy to meet local feedstock requirements to produce value-adding petrochemical products,

The project also features facilities for gas handling and treatment; NGL recovery, storage, and shipping; natural gas dehydration; and residue and acid gas compression. Also included was an upgrade of the gas handling facilities at the four Shaybah GOSPs, construction of related electric and nonelectric utilities, two gas processing units,

Taab scope is not limited but includes the following:

HVAC system including the following:

- Duct work
- Chilled water network
- Chilled water pump room
- Chiller, AHU's, FCU's

NGL Power Generation Project,

Industrial



United Carton Industries Company (UCIC) Plant 5

One of the leading manufacturer for Corrugated boxes in Kingdom have a capacity of 340,000 tonnes from their all plants. Plant 5 is fully automated with latest technology.

Taab scope is not limited but includes the following:

- All LV & MV equipments Such as MDP's Transformers switch gear etc.
- Emergency generator & bus way system
- Low current, fire alarm, Access Control, cctv, BMS, Telephone & Data.
- External & Internal Lighting
- Process & domestic Water supply & drainage systems
- Compressed air systems
- Starch & steam system
- Fire fighting
- Fuel system
- HVAC system Including 3 air type chillers, chilled water network, pump room, 9 package unites, AHU, FCU.

UCIC Plant-5 Project

Industrial

Ge Manufacturing Technology Center

The GE Manufacturing Technology Center (GEMTEC) in Dammam supports the power generation, oil and gas, and water needs of the Kingdom. GEMTEC serves more than 70 customers from 30 countries around the world, servicing components from more than 550 turbines. Of the 600 employees at the center, over 75 percent are Saudis.

Is the largest gas turbine service facility in the world. This established center of excellence for gas turbine service and manufacturing has more than 70 customers in 30 countries and has delivered support to improve the performance of more than 550 gas turbines.

Taab scope is not limited but includes the following:

- All LV & MV equipments Such as MDP's Transformers, switch gear etc.
- Emergency generator & bus way system
- Low current, fire alarm, Access Control, cctv, BMS.
- External & Internal Lighting
- Water supply & drainage systems
- Fire fighting
- HVAC system Including 3 air type chillers, chilled water, pump room, 9 package unites, AHU, FCU

GEMTEC

Industrial



the largest 3PL warehouse in the country, Agility delivers cost-effective logistics solutions tailored to KSA's industrial, retail, fashion and oil & gas businesses.

Taab scope is not limited but includes the following:

- Complete firefighting system
- Plumping & drainage system
- HVAC system including package unite
- Ducting exhaust etc.
- External & internal lighting
- Power distribution network
- Fire Alam system

Agility Warehouse at Dammam Port

Industrial



Work includes construction of one hundred ammunition storage bunkers, six observation towers, two guard house, vehicle various sun shades, Underground Water Tank, Dining Hall & Kitchen (150 Persons), security camera system and administration building and other support facilities, Total built up area is about 1,763,968m2.

Taab scope is not limited but includes the following:

Complete MEP fit-out works for administration building, hundred ammunition storag-bunkers, guard house, observation towers and other facilities.

Central Ammunition Storage Bunker

Military & Defence



966 011 2352524 info@sauditaab.com
P O B : 12456 Riyadh 11473, KSA
www.sauditaab.com

